



APPLIED & INNOVATION RESEARCH CENTRE

SUPPORTING LEARNERS, COMMUNITY AND INDUSTRY THROUGH INNOVATION

Canadian Regional Development: Reflections & Updates from the Kootenay Region

Canadian Rural Revitalization Foundation Conference

Fall 2016

Dr. Terri MacDonald
BC Regional Innovation Chair in
Rural Economic Development

Agenda

The Kootenay Region

Central Themes:

Integrated Development

Place-Based Development

Multi-Level Governance

Innovation & Learning

Arenas:

Recreation

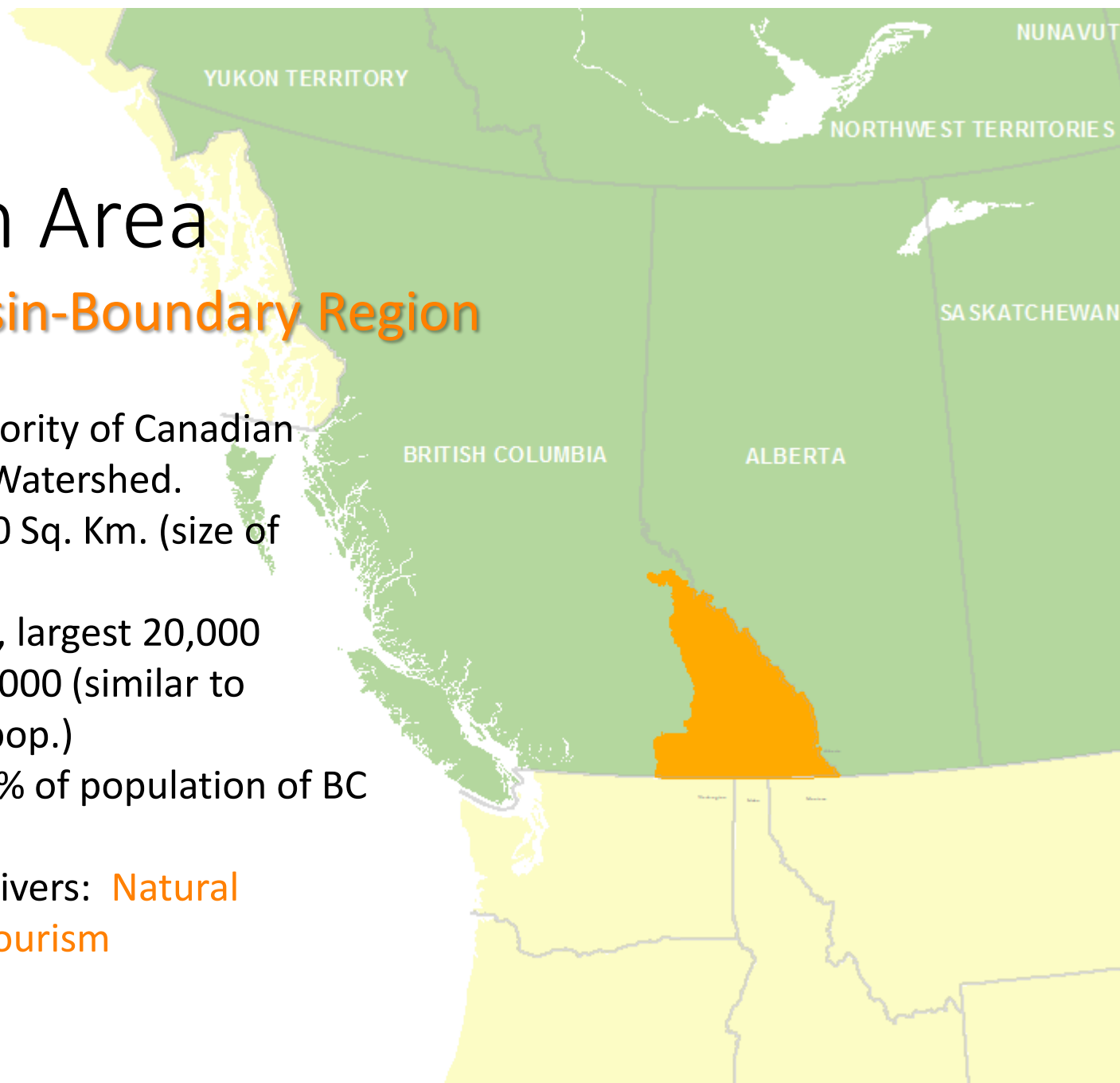
Economic Development



Research Area

Columbia Basin-Boundary Region

- Comprises a majority of Canadian Columbia River Watershed.
- Land area 83,000 Sq. Km. (size of Austria)
- 28 Communities, largest 20,000
- Population: 161,000 (similar to Sudbury's total pop.)
- Accounts for 3.7% of population of BC
- 9% of area of BC
- Key economic drivers: **Natural Resources and Tourism**



Theme: Integrated Development

THEN:

- Managerial elements of policy and planning came out strongly
- Comprehensive planning approach to development was reflected in less than 2/3 of respondents
- 2/3 cited incidence of multidisciplinary approaches
- A modest amount of interaction between the 3 regional districts
- Little evidence of holistic planning
- Low incidences of policy and development planning [*+ shifts here*]
- Alternative economic perspective was universal across the Kootenias
- Environmental ethics strong across the region
- Quality of life explicitly mentioned by many
- Demographic challenges
- Questions around level of public participation

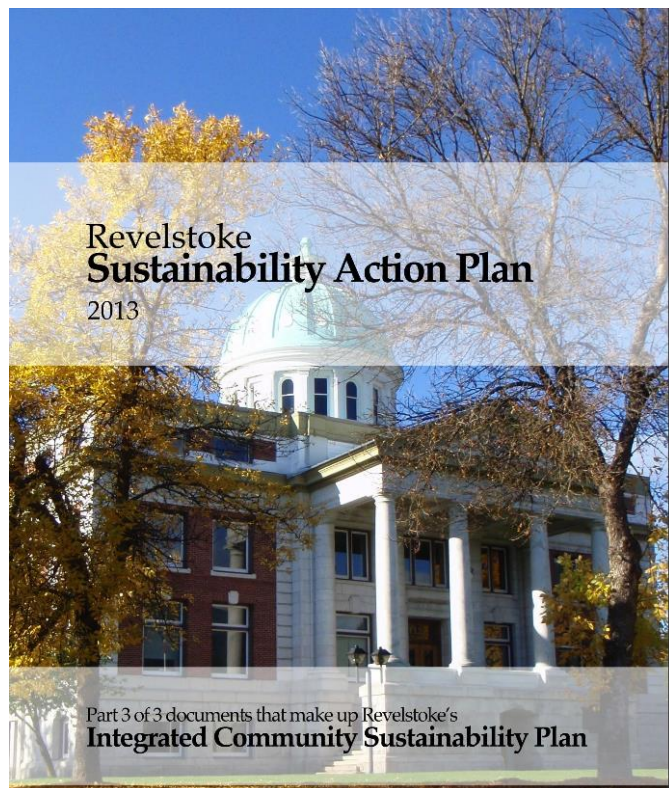
Theme: Integrated Development



INTEGRATED COMMUNITY SUSTAINABILITY PLANS IN THE BASIN-BOUNDARY REGION

ANALYSIS OF PROCESS, PLANS AND INDICATORS

NOW:



Community	Approaches	Definitions	Focus Areas
<u>Cranbrook</u>	Community Defined & Lead, Consultant Supported	Self Defined: "A Sustainable <u>Cranbrook</u> is adaptable to change with social well-being and quality of life supported by a diverse and stable economy, maintained by a healthy environment, balanced to the needs and opportunities of present and future."	"8 Big Ideas": -Water Forever -Hometown Opportunity -Working Together -Moving Connections -Taking the Lead -Living Smart -Restore the Core -Past to Future
<u>Fernie</u>	"Quick Start"; The Natural Step	<u>Brundtland</u> and "Sustainability Vision": "Fernie is an economically, environmentally and socially sustainable community where everyone has the opportunity to pursue an excellent quality of life."	-Buildings & Sites -Community & Individual Health -Housing -Economy & Work -Education & Learning -Arts, Culture & Heritage -Recreation & Leisure -Land Use & Natural Areas -Transportation & Accessibility -Energy, Resources & Waste
<u>Grand Forks</u>	Smart Growth	Self Defined; "Sustainability Stool"	"8 Goals": -Strengthen arts & culture -Fortify sustainable economic development -Ensure a healthy natural environment -Promote constructive government-community relations -Advance the community's capacity for self-sufficiency -Develop a sustainable land use plan -Improve the social fabric of the community -Integrate health principles into all decisions

Theme: Integrated Development NOW:

<u>Invermere</u>	"Quick Start"; The Natural Step	<u>Brundtland</u>	<ul style="list-style-type: none"> -Buildings & Sites -Community & Individual Health -Economy & Work -Education, Arts, Culture & Recreation -Energy -Food -Land Use & Natural Areas -Transportation & Mobility -Water & Waste 	<u>Rossland</u>	Community Defined & Lead, Consultant Supported	<u>Self Defined</u> (almost identical to the <u>Brundtland</u> definition): "Meeting our needs today without compromising the ability of future generations to meet their needs, and to enjoy a similar quality of life to what we enjoy today..."	<ul style="list-style-type: none"> -Land Management -Natural Environment & Resource Lands -Community Economic Development -Recreation & Leisure -Housing & Affordability -Transportation -Intergenerational Care & Learning -Sense of Community -Energy & Air Quality -Water & Solid Waste Management -Governance
Kimberley	"Quick Start"; The Natural Step	<u>Brundtland</u> and their own, more "precise" definition: "...a sustainable community is one with a robust resilient economy within and serving a strong, equitable society, within a highly functioning natural environment."	<ul style="list-style-type: none"> -Arts, Culture & Heritage -Buildings & Sites -Community & Individual Health -Economy & Work -Education -Energy, Waste & Water -Food -Land Use & Natural Areas -Recreation & Leisure -Transportation & Mobility 	<u>Sparwood</u>	AUMA Process	<u>Brundtland</u>	<ul style="list-style-type: none"> -Health and Social -Arts, Culture & Heritage -Recreation & Leisure -Natural Areas -Built Environment -Governance & Partnership -Communication -Economic Development -Energy -Food -Materials & Solid Waste -Learning -Volunteerism -Transportation
Nelson	Community Defined & Lead, Consultant Supported	5 Sustainability Principles: -Cultural Strength -Healthy Neighborhoods -Robust Ecosystems -Prosperity -Resiliency	<ul style="list-style-type: none"> -Arts, Culture & Heritage -Energy & Climate Change -Food, Food Security & Agriculture -Healthy Living & Social Well-Being -Land Use -Water, Waste Water, <u>Stormwater</u> -Transportation & Mobility -Solid Waste -Natural Areas, Recreation & Leisure -Local Economy 				
New Denver	Transitions Movement and Twelve Principles of Permaculture	Resiliency rather than Sustainability: "...being able to adapt to change."	<ul style="list-style-type: none"> -Water -Energy -Food -Air -Transportation -Land -Shelter -Physical & Mental Health -Economy -Heritage, Arts, Culture, Community -Governance & Education 	<u>Valemount</u>	"Quick Start"; The Natural Step	<u>Brundtland</u>	<ul style="list-style-type: none"> -Buildings & Sites -Community & Individual Health -Economy & Employment -Education and Culture -Energy -Food & Agriculture -Land Use & Natural Areas -Recreation & Leisure -Resources, Waste & Water -Transportation & Mobility

Theme: Place-Based Development

THEN:

- Weak regional identity (with exceptions for fighting something that is coming from the outside or responding to disasters)
- Stronger attachment to community identity over region
- Presence of informal, organic, bottom-up forms of regional collaboration – but that lacked capacity and depend on key individuals/external forces
- Recognition of importance of place, but barriers to place based development

NOW:



Columbia Basin
Water
Smart

Theme: Multi-Level Governance

imaginekootenay Your better life [LOG IN ▶](#)

— IMAGINE —
WORKING
A great career is waiting for you in the Kootenay region.
[LEARN MORE ▶](#)

— IMAGINE —
INVESTING
Explore the advantages of doing business in the Kootenay region.
[LEARN MORE ▶](#)

— IMAGINE —
LIVING
Discover why you will love living in the Kootenay region.
[LEARN MORE ▶](#)

- Castlegar, BC
- Columbia Valley, BC
- Boundary Country, BC
- Fernie, BC
- Golden, BC
- Kimberley, BC
- Kootenay Lake, BC
- Nakusp, BC
- Nelson, BC
- Revelstoke, BC
- Sparwood, BC
- Trail, Rossland & Area, BC



Theme: Learning & Innovation

THEN:

- Innovative policy and support institutions include: innovation councils, the CBT, CFDCs, BC Applied Research and Innovation Network, National Research Council, other provincial support
- Programs: invest kootenay, 350 buy local program
- Examples of openness to creativity, risk, and change discussed by the vast majority
- Learning resources discussed by half, including Selkirk, COTR, but also lack of university in region (similar for knowledge infrastructure)
- Majority discussed knowledge partners, including the tri-cities, cross-sector partnerships, CBT
- Majority discussed reflection, seeking, sharing knowledge – 2/3 actively shared ideas, experience, lessons learned with other people or orgs
- Challenges to innovation include access to capital, lack of trust between organizations and municipalities, demographics, human resource issues, conflicting policies

Theme: Learning & Innovation

NOW:



Columbia Basin Alliance for Literacy



MIDAS is an applied research, commercialization and digital fabrication training facility in Trail, B.C., focused on the metallurgical sector that exists in the region surrounding the Teck Trail Operations smelter. MIDAS makes recent advances in manufacturing technology (including 3D Printing) accessible to West Kootenay companies, entrepreneurs and students.

Theme: Learning & Innovation

NOW:

Learning by Doing

Student learning is the glue that binds!

Use a collaborative learning approach



“DEVELOPING AND NURTURING PARTNERSHIPS WITH SMES TAKES TIME.”

Ian Parfitt, co-ordinator of the Selkirk Geospatial Research Centre (SGRC)

Manage expectations, engage in clear communications, state intentions up front

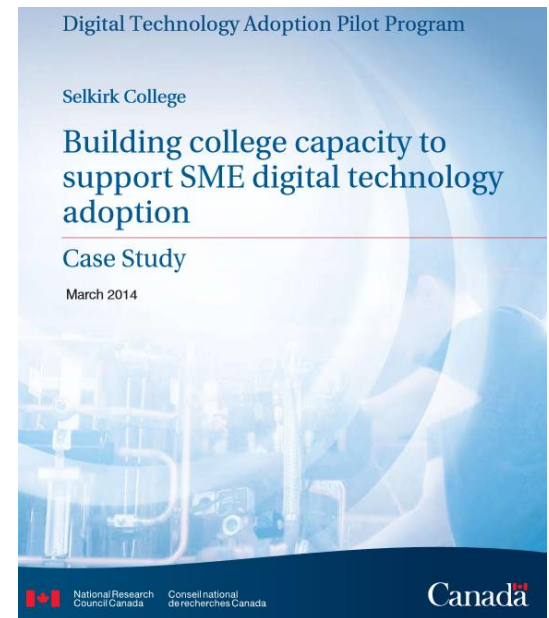
“WITH THEIR KNOWLEDGE AND RESOURCES, COLLEGES LIKE SELKIRK SHOULD BECOME CENTREPIECES IN THE ECONOMIC DEVELOPMENT OF SMALL TOWNS ALL ACROSS CANADA.”

Colin Carew, owner and director, Valhalla Technologies

Policies, procedures and integration of administrative functions provides a critical backbone

“COLLEGES ARE IN A GOOD POSITION TO SHOW LEADERSHIP IN BRINGING TOGETHER SERVICE PROVIDERS FOR THE BENEFIT OF BUSINESSES AND THE CANADIAN ECONOMY.”

Terri MacDonald, Regional Innovation Chair in Rural Economic Development, Columbia Basin Rural Development Institute



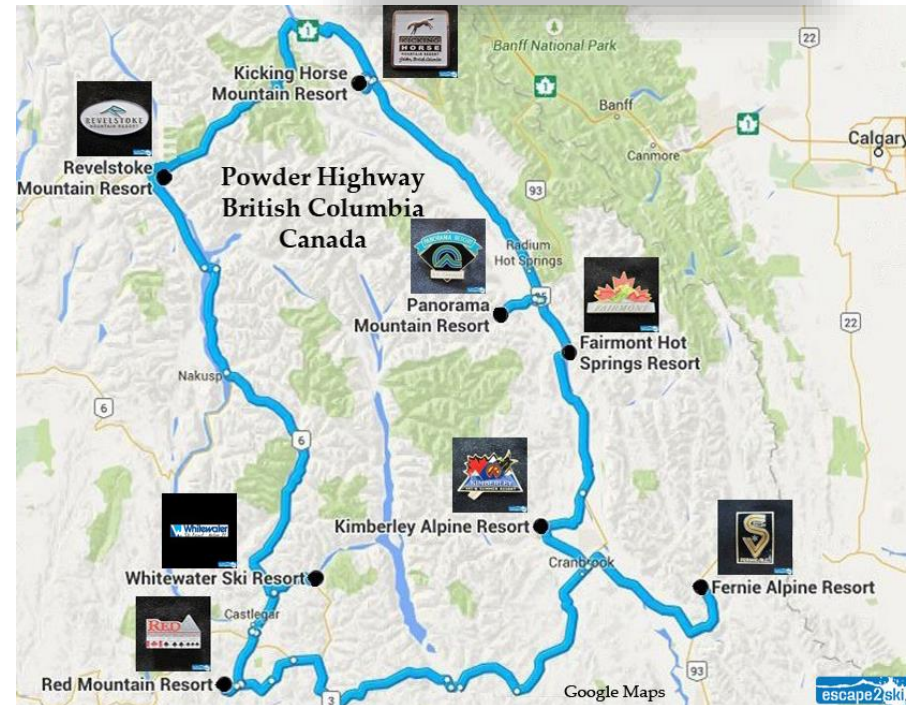
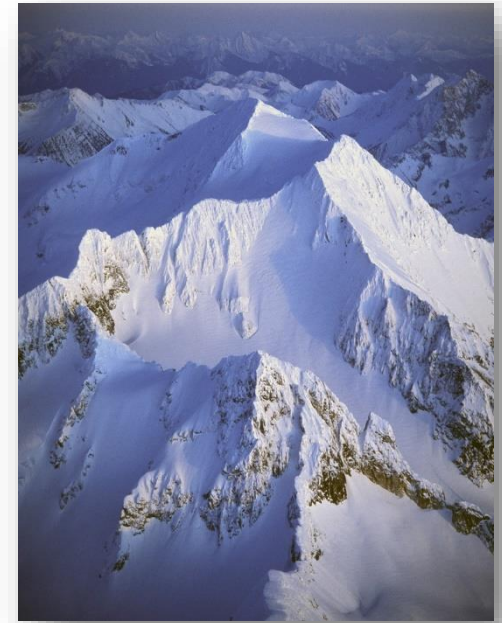
Arena: Recreation

THEN:



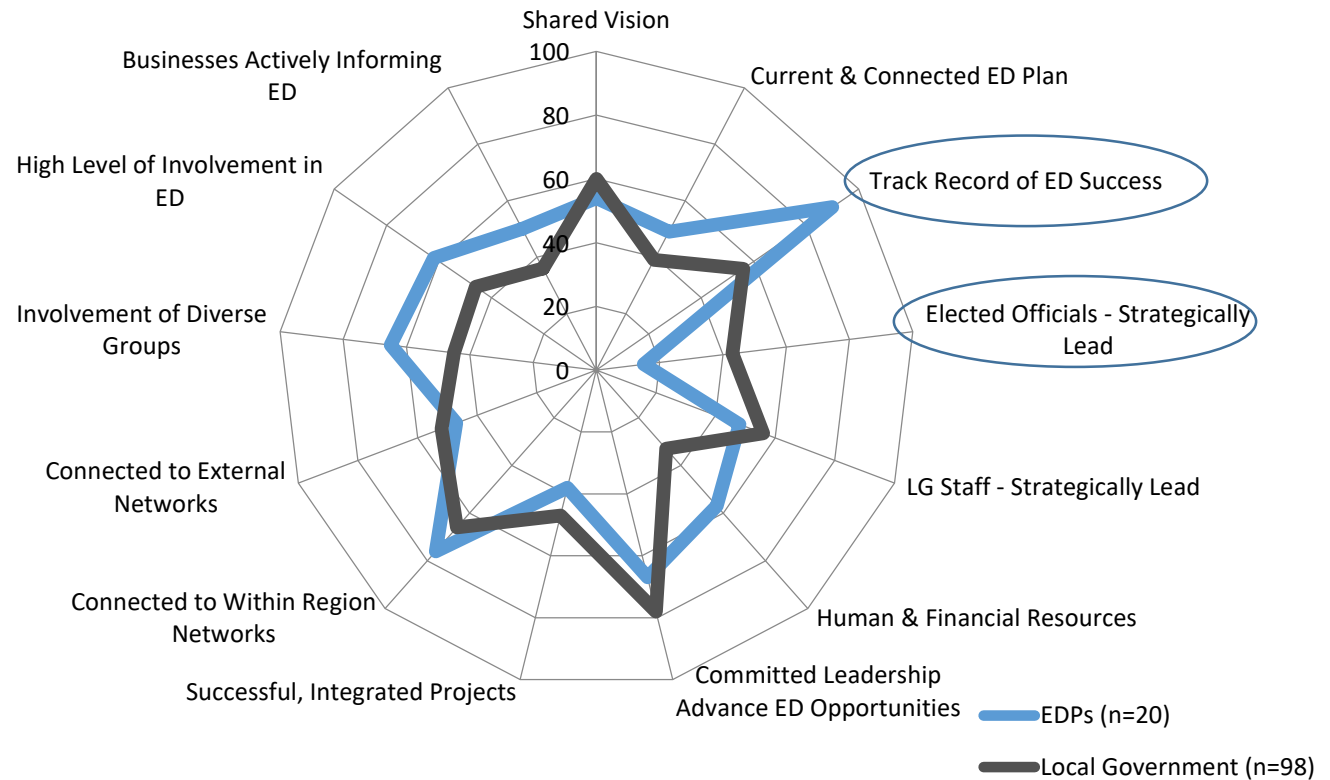
(Columbia Valley Golf Trail 2009)

NOW:



Arena: Economic Development

Understanding
Economic
Development
Capacity



Columbia Basin/Boundary
Economic Development Practitioners Network

Steering Committee
Terms of Reference

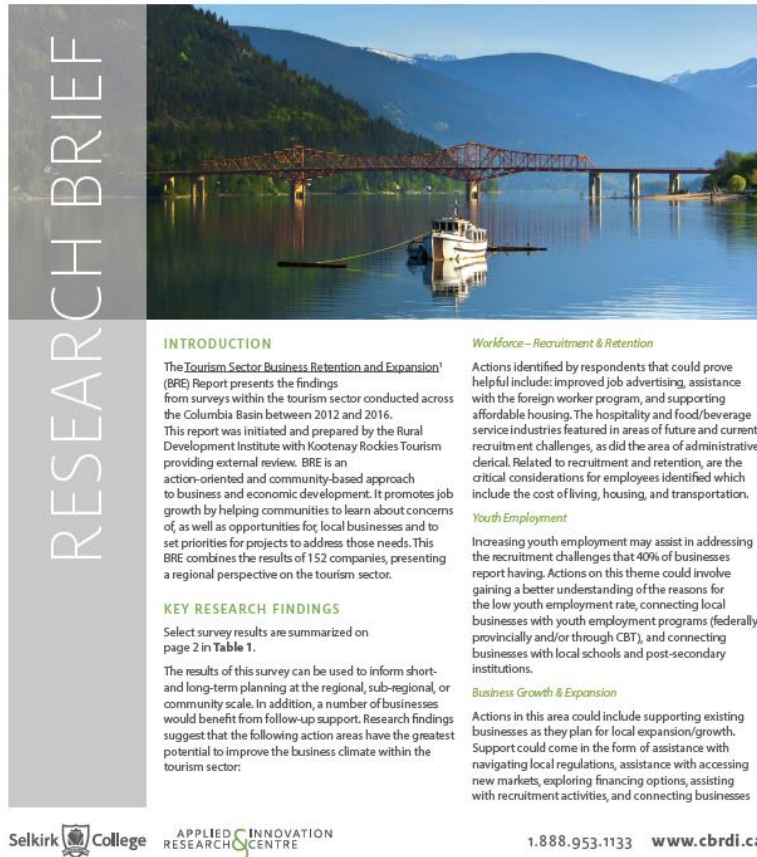
Social Network Analysis...
coming soon

Arena: Economic Development



RURAL DEVELOPMENT INSTITUTE RESEARCH BRIEF FALL 2016

Tourism Sector Business Retention & Expansion



- Over 1000 businesses interviewed by community partners for Business Retention and Expansion
- 30+ partnerships (local government, Community Futures, Chambers of Commerce, Development Boards, provincial government, provincial economic development association, Columbia Basin Trust)
- Primary sectors include retail trade, professional services, manufacturing, and accommodation & food services
- Over 140 hour on implementation tools, 700 hours of direct research support and over 150 hours of training
- 7 faculty and students involved
 - 5 faculty
 - 2 co-op students



APPLIED & INNOVATION RESEARCH CENTRE

SUPPORTING LEARNERS, COMMUNITY AND INDUSTRY THROUGH INNOVATION

Canadian Regional Development: Reflections & Updates from the Kootenay Region

Canadian Rural Revitalization Foundation Conference

Fall 2016

Dr. Terri MacDonald
BC Regional Innovation Chair in
Rural Economic Development