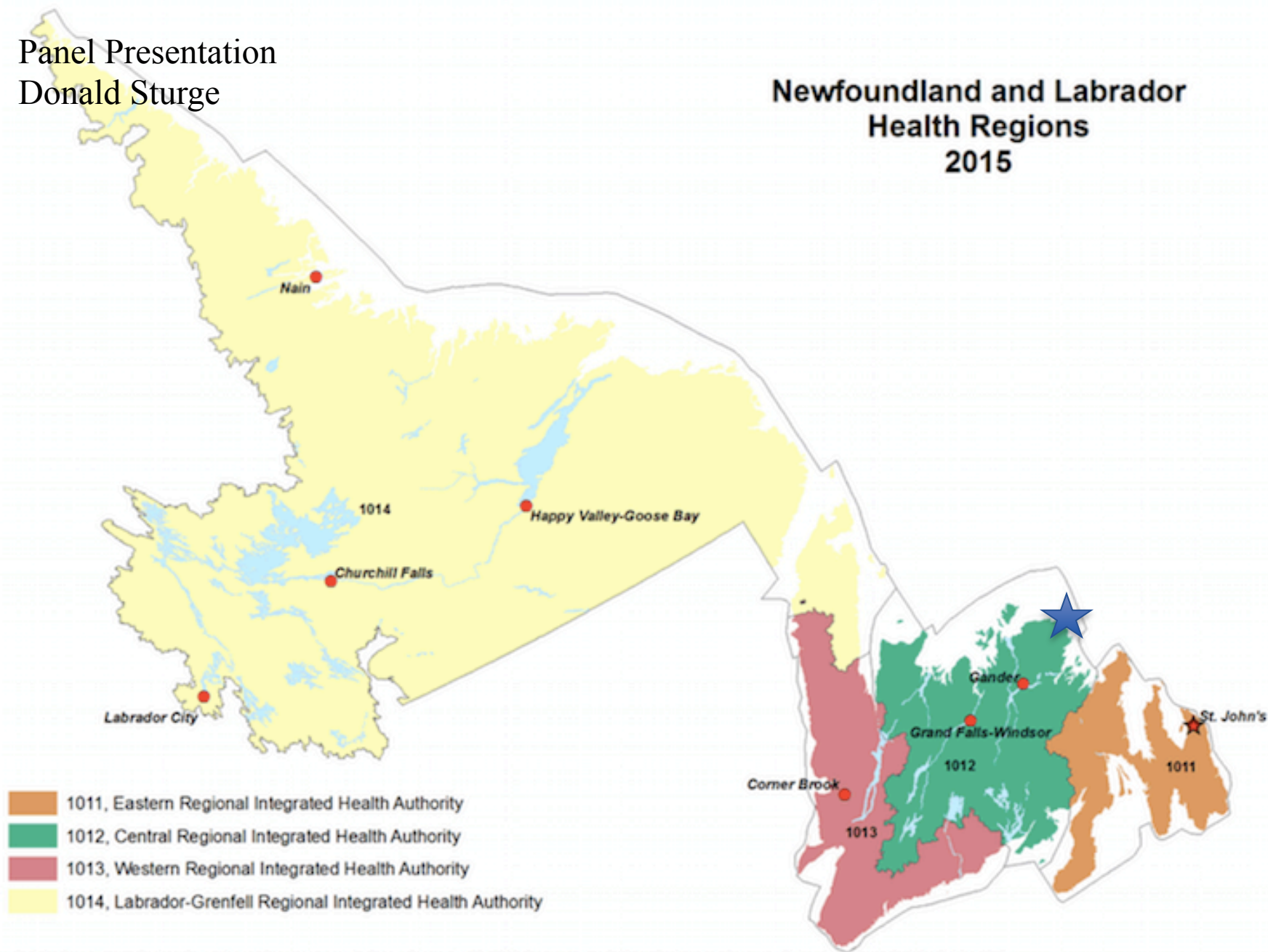


## Newfoundland and Labrador Health Regions 2015



Source: Statistics Canada, Health Regions: Boundaries and Correspondence with Census Geography, (82-602-X). Produced by the Statistical Registers and Geography Division for the Health Statistics Division, 2015.

# NEWFOUNDLAND AND LABRADOR





# IMPORTANCE OF THE REGION FOR RURAL DEVELOPMENT

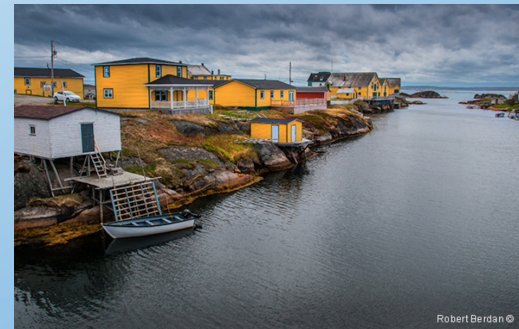


CHANGING DEMOGRAPHICS  
SHARED, QUALITY SERVICES  
ECONOMIES OF SCALE



## *Examples:*

- School and library consolidation
- Municipal amalgamation: fire protection, town admin, water treatment
  - Waste management
  - Recreation
  - Envir. stewardship
  - Rural development
  - Primary health services
  - Arts, culture and tourism



# TRENDS

- SUPPORT FROM SENIOR GOVERNMENTS HAS BEEN LOST IN A NUMBER OF AREAS – NO FORMALIZED STRUCTURE OR REPORTING MECHANISM
- IMPROVED WASTE MANAGEMENT
- INCREASED DISCUSSION AND COLLABORATION AMONG MUNICIPALITIES





# REGIONAL DEVELOPMENT RESEARCH THEMES

- INTEGRATED, HOLISTIC APPROACH AND COLLABORATIVE GOVERNANCE IS CRITICAL
  - LOCAL EXAMPLES DO EXIST (IBEC, PRIMARY HEALTH CARE, CAPE FREELS DEV. ASSOC.)
- LIMITED FORMAL RURAL-URBAN COLLABORATION
  - SOME EFFORT FROM GANDER CHAMBER OF COMMERCE, AIRPORT AUTHORITY, REPRESENTATION ON REGIONAL BOARDS
- LEARNING
  - IMPORTANCE OF COMMUNITY TO COMMUNITY KNOWLEDGE AND SKILLS TRANSFER

# “BEST” PRACTICES

- CITIZEN ENGAGEMENT
  - SURVEYS, TOWN MEETINGS, FOCUS GROUPS, YOUTH INVOLVEMENT
- COLLABORATION IN FUNDRAISING
  - YOUTH PROGRAMS, HEALTH
- NETWORKING AND CONNECTING
  - INFORMAL AND FORMAL
- PARTNERSHIPS
  - PUBLIC-PRIVATE (E.G. PROPOSALS)
- EVIDENCE-BASED DECISION-MAKING







# FUTURE DIRECTIONS

- ESTABLISH FORMALIZED STRUCTURE FOR REGIONAL DEVELOPMENT GOVERNANCE WITH CORE FUNDING SUPPORT
  - MORE OPPORTUNITIES FOR LEARNING AND NETWORKING TO SUPPORT LOCAL LEADERS AND VOLUNTEERS
- 